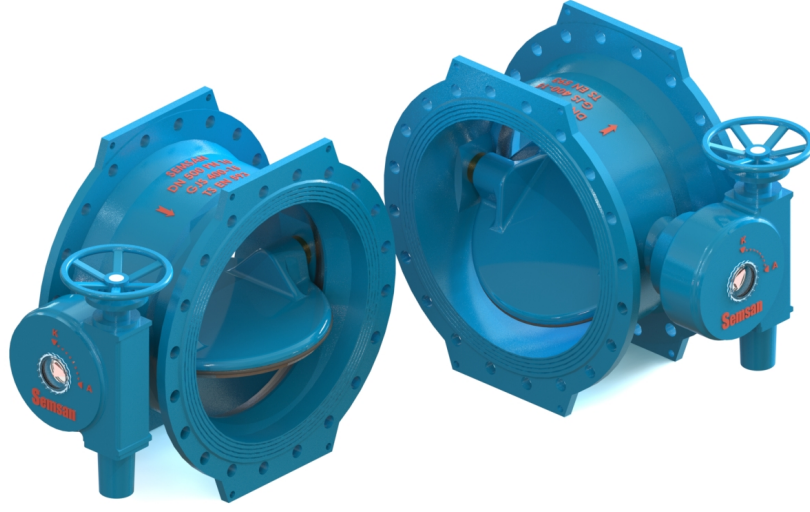


WPKV
BUTTERFLY VALVE
SUITABLE FOR
DRINKING WATER



ADVANTAGES

- Compact Design (EN 558-1 Series 14)
- Low Operation Torque for Bigger Diameters with Double Eccentric
- Low maintenance cost
- Leakage Tests, EN 12266 Class A (completely tightness)

DESIGN

- TS EN 593 Certificated
- Double Flange
- Double Eccentric
- Flanges DIN EN 1092 PN 25
- Valve Shaft Double Offset
- Face to Face EN 558-1 Series 14 (DIN 3202, F4)
- Mechanical Position Indicator and Limit stops on Gear Box
- Body Sealing Surface;
- Corrosion - Resistant Stainless Welded AISI 316 and Microfinished.
- Adjustable and Replaceable Sealing Ring (WRAS approved EPDM) Max Operation Temperature 85 °C

APPLICATION AREAS

- Drinking Water Lines
- Drinking Water Treatment Plants
- Pumping Stations
- Irrigation Projects
- Dams and Reservoirs
- Neutral Gas and Cool Power Plants
- Hydroelectric Power Plants
- Industrial Plants

CORROSION PROTECTION

- Electrostatic Powder Coating (Coating Brands Certificated by WRAS)

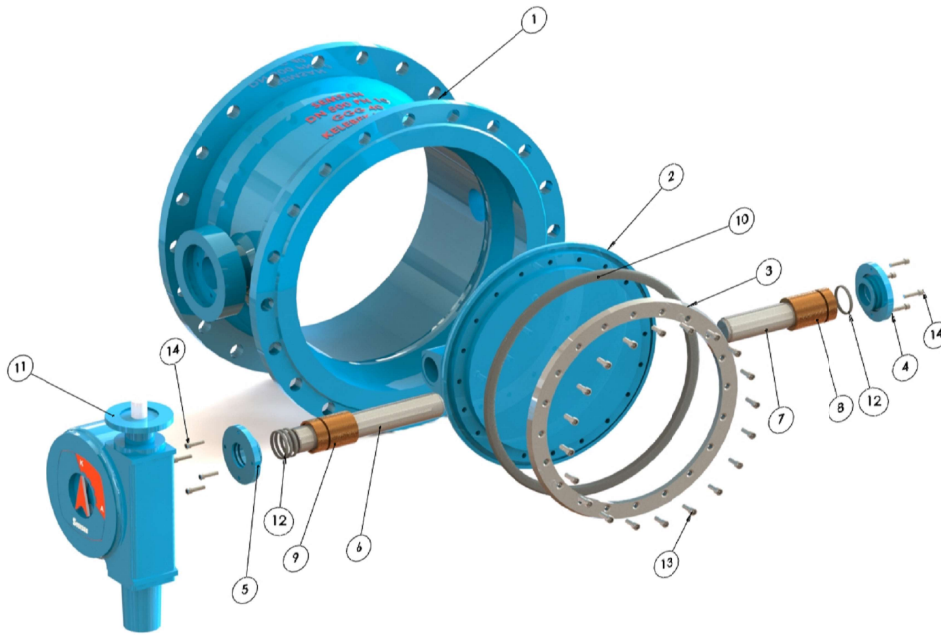
OPERATION

- Handwheel
- Electrical Actuator
- Pneumatic Actuator
- Hydraulic Actuator
- On – Off or Modulating Operation

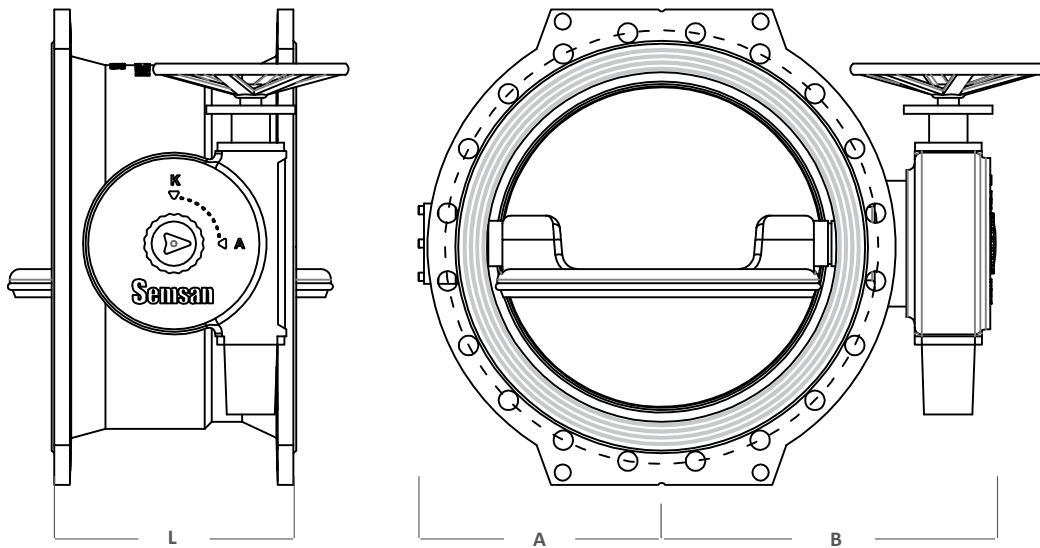
LAST QUALITY CONTROL EN 12266 – 1 CLASS A

Nominal Diameter (DN)	Nominal Pressure PN kg / cm2	Test Pressure		Max Pressure for Temperature 85 °C
		Body	Disk	
100.....400	25	37,5	27,5	25

* All of dimensions and explanations has been given for information. SEMSAN reserve right to keep change all them off.


PART LIST

1	VALVE BODY
2	VALVE DISC
3	SEALING RING FLANGE
4	BLIND CAP
5	SHAFT CAP
6	VALVE CONTROL SHAFT
7	VALVE BEARING SHAFT
8	SHORT BEARING
9	LONG BEARING
10	SEALING RING
11	GEAR BOX
12	O RINGS
13	INSIDE BOLTS
14	OUTSIDE BOLTS

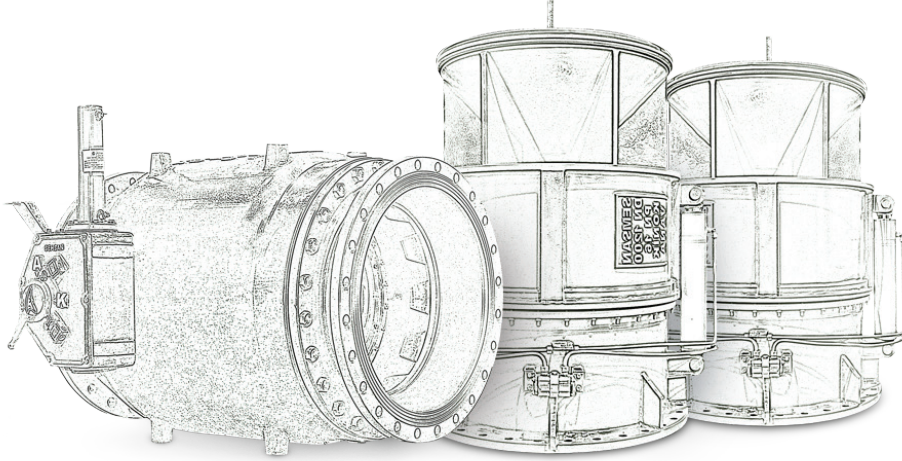


PN25 (DN)	BODY			FLANGES					GEAR BOX			WEIGHT (KG)
	A (mm)	B (mm)	L (mm)	D (mm)	K (mm)	d2 (mm)	b (mm)	No. of Holes	Model	Turn/ Strok	Torque	
100	105	230	192	265	190	23	16	8	NDK50	10	PLEASE ASK	23
150	115	277	210	300	250	28	20	8	NDK 80	13,5		32
200	150	308	230	360	310	28	22	12	NDK 80	13,5		50
250	180	351	250	425	370	31	24,5	12	NDK 110	13		67
300	215	419	270	485	430	31	27,5	16	NDK 110	13		103
350	240	450	290	555	490	34	30	16	NDK 125	13		133
400	275	485	310	620	550	37	32	16	NDK 125+R3	45,75		174

* All of dimensions and explanations has been given for information. SEMSAN reserve right to keep change all them off.



PUMP, VALVE & DAM
EQUIPMENTS
PRODUCT CATALOGUE



SEMSAN POMPA MAKİNA SANAYİ VE TİCARET LTD. ŞTİ.

Adres : Organize Sanayi Bölgesi Erdoğan Cebeci Bulvarı.
No:42/B Kutlukent / SAMSUN / TURKEY
Phone : +90 362 266 88 33
Fax : +90 362 266 88 58
E-mail : semsan@semsan.com.tr
Web : www.semsan.com.tr

